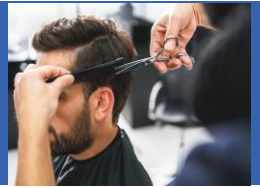


## Certificate III in Barbering

### SHB30516



This qualification reflects the role of barbers who use a range of well-developed sales, consultation and technical skills and knowledge to provide a broad range of barbering services to clients. They use discretion and judgement to provide client services and take responsibility for the outcomes of their own work.

This qualification provides a pathway to work as a barber in any industry environment, usually a barber shop or salon.

#### Occupational titles may include:

- ❖ Barber

#### COURSE REQUIREMENTS:

##### DOMESTIC STUDENTS

Training and assessments are conducted in English. A pre training intake interview will be conducted, and each learner will undertake a Language, Literacy and Numeracy Assessment.

There are no pre-requisites or any other training package entry requirement to enrol in this course.

##### INTERNATIONAL

English requirements:

- must have an IELTS score of 5.5 or
- must have a TOEFL iBT score of 46 or
- must have a PTE Academic score of 42 or
- must have a Cambridge English Advanced (CAE) score of 162 or
- must have an OET score of B for each component
- Completed year 11 or equivalent

#### TRAINING DELIVERY:

**Face to Face and Practical Simulations** - Campus onsite delivery in classroom with an educator face to face including simulation activities.

**Virtual Classroom via Zoom and Practical Simulations** - (Blended Learning) - Delivery through interactive virtual classrooms with an educator in real time delivery for theory component. Simulated observations must be attended face to face in the classroom under the supervision of trainer.

**Domestic students:** ☐ 13 13 89

**International students:** ☐ +61 3 9450 0500

#### DURATION:

- Domestic: 52 weeks including 10 weeks break
- International: 52 weeks including 10 weeks break

# Units of Study



Students will need to complete 26 Units of Competency, consisting of: 21 Core, 5 Electives

(NB: Elective units will be selected for delivery by ETEA and are subject to change to meet client and industry requirements)

Unit Code	Unit Name
<b>Core</b>	
SHBHCUT001	Design haircut structures
SHBHCUT002	Create one length or solid haircut structures
SHBHCUT003	Create graduated haircut structures
SHBHCUT004	Create layered haircut structures
SHBHCUT005	Cut hair using over-comb techniques
SHBHCUT007	Create combined traditional and classic men's haircut structures
SHBHCUT009	Cut hair using freehand clipper techniques
SHBHCUT012	Shave heads and faces
SHBHCUT011	Design and maintain beards and moustaches
SHBHCUT013	Provide men's general grooming services
SHBHDES001	Dry hair to shape
SHBHIND001	Maintain and organise tools, equipment, and work areas
SHBHIND003	Develop and expand a client base
SHBHTRIO01	Identify and treat hair and scalp conditions
SHBXCCS001	Conduct salon financial transactions
BSBSUS201	Participate in environmentally sustainable work practices
SHHBAS001	Provide shampoo and basin services
SHBXCCS002	Provide salon services to clients
SHBXIND001	Comply with organisational requirements within a personal services environment
SHBXIND002	Communicate as part of a salon team
SHBXWHS001	Apply safe hygiene, health, and work practices
<b>Elective</b>	
SHHBAS002	Provide head, neck, and shoulder massages for relaxation
SHBHCLS002	Colour and lighten hair
SHBHCLS004	Neutralise unwanted colours and tones
SHBXCCS004	Recommend products and services
SIRRINV001	Receive and handle retail stock

## RECOGNITION OF PRIOR LEARNING AND/OR CREDIT TRANSFER

You can apply to recognise your prior learning, work experience and course work towards this qualification.

Detailed information is available on the ETEA website [www.etea.edu.au](http://www.etea.edu.au)

## FURTHER INFORMATION

For further information, including student pre-engagement information, entry requirements, course duration, assessment methods, how to enrol, RPL, Credit Transfer, pathways etc. please visit our website at [www.etea.edu.au](http://www.etea.edu.au)

## GOVERNMENT FUNDING (Only if Available):

You may be able to access government funding if you meet the eligibility criteria.

To check if you are eligible visit [www.etea.edu.au](http://www.etea.edu.au)

## FURTHER INFORMATION

Visit our website or contact your closest office for further information.

[www.etea.edu.au](http://www.etea.edu.au)



**ADELAIDE**  
Level 2 East, 50 Grenfell Street,  
RUNDLE MALL SA 5000  
Tel: +61 8 8150 9500

**MELBOURNE**  
Head Office  
Level 1, 113 Burgundy Street,  
, HEIDELBERG VIC 3084  
Tel: +61 3 9450 0500

**PERTH**  
Unit 4, 78-84 Catalano Circuit  
CANNING VALE WA 6155  
Tel: +61 8 6350 9400

**SYDNEY**  
Level 1, 21 Argyle Street,  
Paramatta NSW 2150  
Tel: +61 2 9260 0400